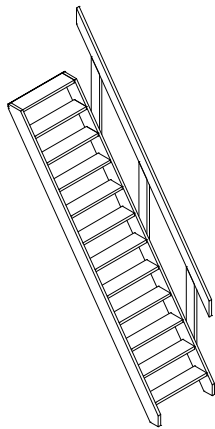
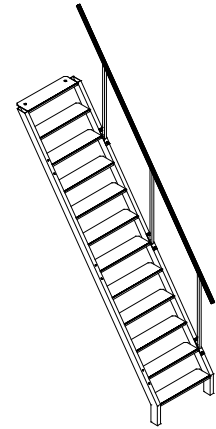


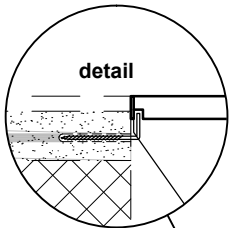
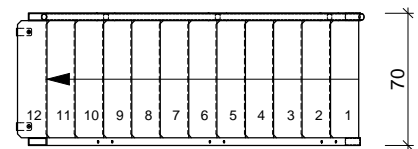
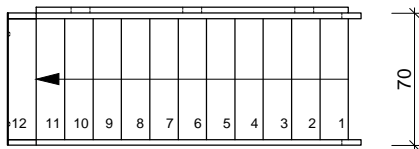
### keldertrap in beuk escalier en hêtre



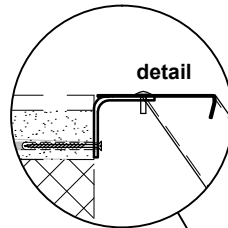
### keldertrap in metaal escalier en métallique



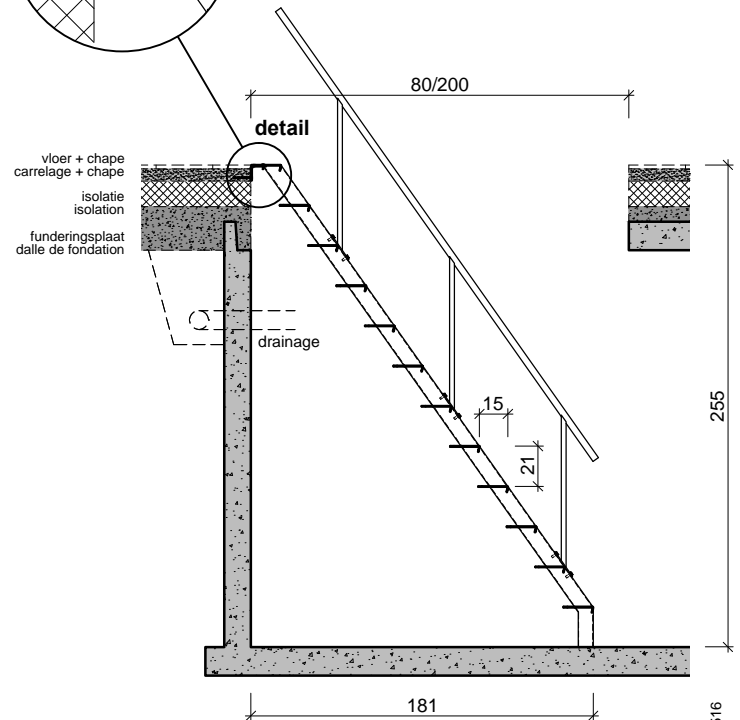
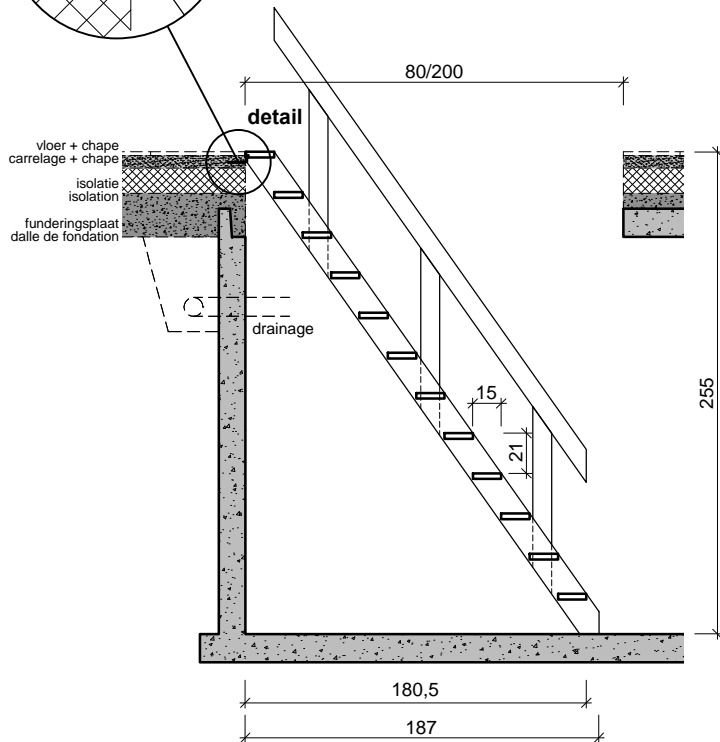
### BOVENAANZICHT VUE DE DESSUS



inclusief bevestigingshaken  
bovenste trede voorzien van inhaakopening  
y compris éléments de fixation à monter  
sous la marche de haut (avec ouverture)



In 90° geplooide bevestigingsplaat, te monteren  
onder de bovenste trede (inclusief bouten)  
Plaque de fixation pliée à 90°  
à monter sous la marche de haut (boulons inclus)



### DOORSNEDE COUPE

O Beton nv Schaapbruggestraat 26 B-8800 Rumbeke

Tel: +32 51 680068 Fax: +32 51 680069 mail: info@obeton.be web: www.obeton.be